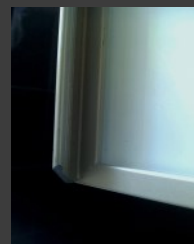
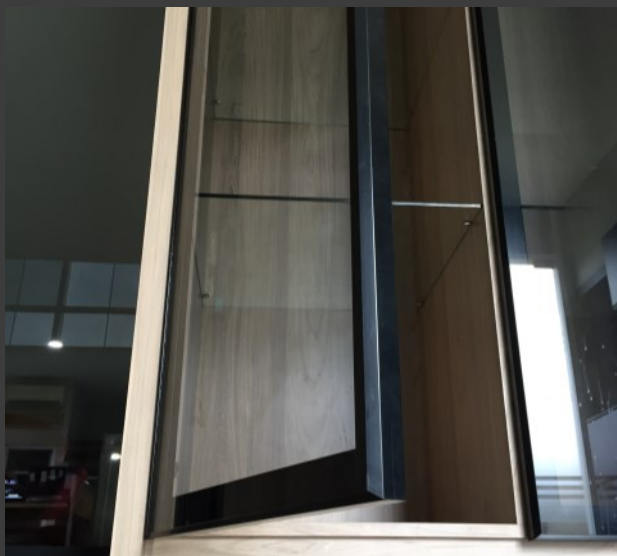


# *trepalm*



**ALUMINIUM SWINGING DOOR SERIES  
LIGHTING SHELVES & MODULAR POLE**

## TYPE : T 084 H



### Specifications :

- Aluminium frame door for swinging application with modern and simple design.
- Built in profile protruded handle in good and ergonomic shape.
- Frames supply with joint connector and also glass seal to fit 5 mm infill material.
- Finish in high quality silver anodize. Other colors can be supplied in powder coating finish.
- Maximum door size in 2600mm height and 600mm width.

## TYPE : T 035 RH / T 035 H



### Specifications :

- Aluminium frame door for swinging application with minimalist and modern in only 3mm door's front view
- Built in profile handle (recessed [RH] and protruded [H]) in good and ergonomic shape.
- Frames compatible with non see through glass only, usually using Mirror or Painted Glass 5 mm.
- Frames supply with joint connector and sealant to fit 5 mm infill material .
- Finish in high quality silver anodize. Other colors can be supplied in powder coating finish.
- Maximum door size in 2600mm height and 600mm width.

## TYPE : T 405



### Specifications :

- Aluminium frame door for swinging application and designed to fit door locking system. (type and specification are recommended)
- Frames supply with joint connector and glass seal to fit 5 mm infill material.
- Finish in high quality silver anodize. Other colors can be supplied in powder coating finish.
- Maximum door size in 2400mm height and 600mm width.

## TYPE : T 074 RH / T 074 H

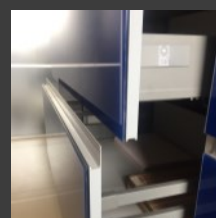
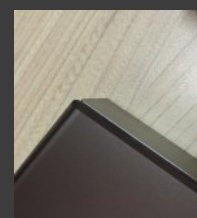
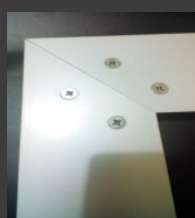
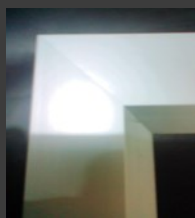


### Specifications :

- Aluminium frame door for swinging application with modern design.
- Built in profile handle (recessed [RH] and protruded [H]) in ergonomic shape.
- Frames supply with joint connector and glass seal to fit 5 mm infill.
- Finish in high quality silver anodize. Other colors can be supplied in powder coating finish.
- Maximum door size in 2400mm height and 600mm width.

## TYPE : T 054/T 054 H/T 054 RH

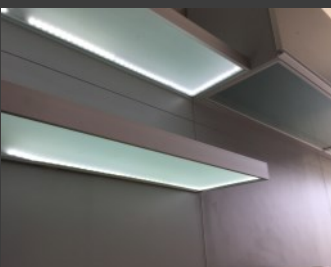
*NEW!*



### Specifications :

- New super exposed aluminium frame door, fully glass look on door's front view, stick to the flexi shape aluminium frame at back side.
- Built in profile handle with extraordinary modern & ergonomic shape.
- Frames compatible with non see through glass only, usually using Mirror or Painted Glass 5 mm.
- Finish in high quality silver anodize. Other colors can be supplied in powder coating finish.
- Maximum door size in 2400mm height and 600mm width.

## MODULAR SYSTEM & LIGHT BOX



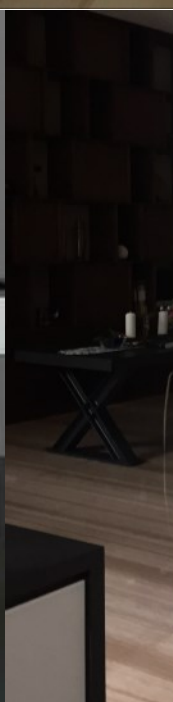
### Specifications of Modular Pole System :

- Rounded and rectangular shape aluminium pole, in silver anodized or powder coated finish. (other colors can be supplied upon request with minimum quantity)
- Strong & modern look with high flexibility to arrange, capacity 150 kg/shaft
- Wooden and glass shelves bracket are supplied upon customer's need.
- Maximum height 3000mm (floor to ceiling mounted) and 2600mm

### Specifications of Light Box :

- Aluminium and glass shelves with LED lighting system.
- Aluminium profiles assembled with connectors and covered by frosted glass on top and bottom as well.
- For free hanging purposes or to be placed inside the cabinet.
- Maximum depth 250mm from wall (free hanging) and 1500mm width (any special size should be discussed with our marketing staff).





## PT. Trepalm Alumintra Perkasa

Jl. Kavling DPR Serua No.51, Bojong Sari Depok  
 Tel. 021 22741580 / 021 22741982 Fax. 021 22741916  
 e : trepalm\_ap@yahoo.co.id

[www.trepalm.co.id](http://www.trepalm.co.id)